



EOD/Bomb Tech DR System

Introducing the intuitive ultra-portable tactical digital radiography system designed by Cuattro **with** Bomb Techs, **for** Bomb Techs.

NEW

wireless

Quickly switch between wireless and wired use *

Cuattro EOD™ Product Features:

Proprietary Automatic Exposure Detection with True OnePulse

- Fast and Superior Sensitivity (lower noise, higher signal)
- Nearly Zero EMI emissions for safe field operations

Latest Detector Technologies

- Flexible Non-Glass Substrate for substantial increase in durability and ruggedness
- Lightweight (1.7kg with internal batteries)
- Water and Dust resistant (IP 67 rating)
- Onboard image storage (200 images)
- Thin bezel edges (2.7mm on two sides)

Exposure Anytime Technology

- Offline image capture and onboard storage
- Power on detector and expose (with or without acquire device-software)
- Automatically pushes images to tablet when available

Long Range Wireless Control and Data

- Long Range wireless technologies
- Control Generator and Detector simultaneously
- Fast Image transfer and display

Best Image Quality

- HD Image (99 micron)
- 16-Bit Dynamic range
- Low Dose Capable
- High-sensitivity mode to view dense objects
- Target-specific multi-frequency image tuning algorithms



Scan code with smart phone for demo video



800.709.4514
www.cuattro.com

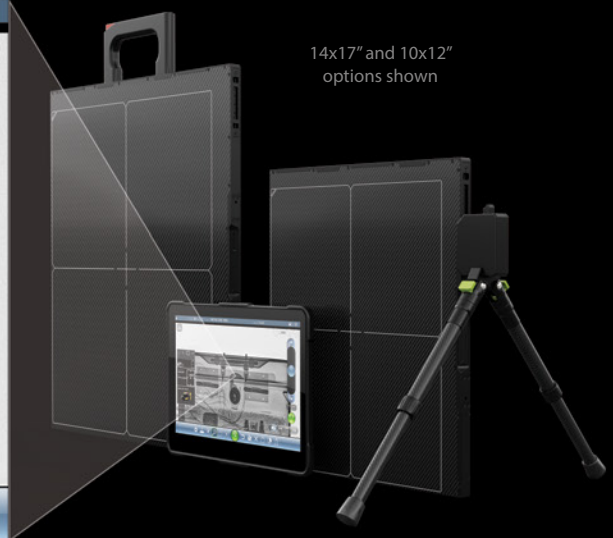
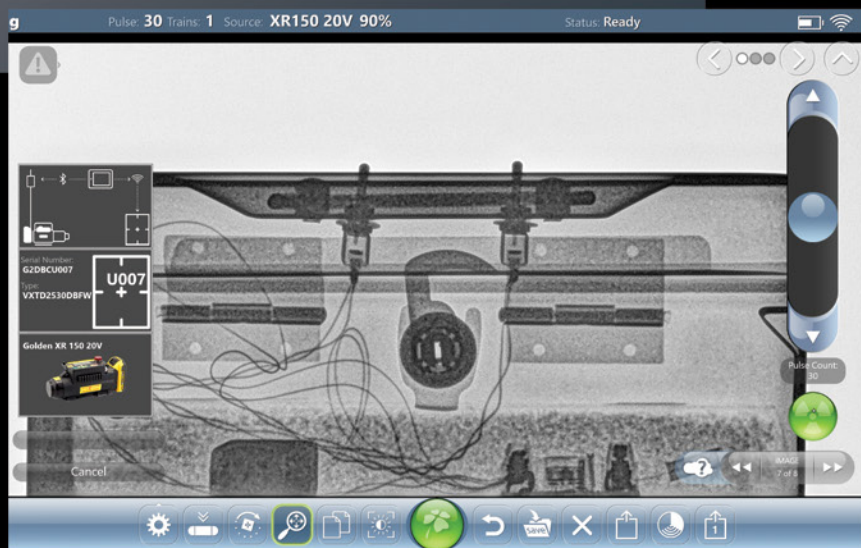

cuattro

10x12"/14x17" Wireless Detector Specs:

- Detector TFT Type Flexible, Non-Glass Substrate
- Scintillator GadOx
- Pixel Pitch 99 micron
- Pixel Matrix
 - 10 x 12" 2524 x 3036 pixels
 - 14 x 17" 3534 x 4302 pixels
- Image Size
 - 10 x 12" 25.4cm x 30.5cm
 - 14 x 17" 35.3cm x 43.0cm
- Grayscale 16 bits
- Image Acquisition Time Wired: 3 secs, Wireless: 5-6 secs
- Offline Image Storage 200 Images
- Dimensions 15.75" x 18.50" x 0.67"
- Weight (with batteries installed)
 - 10 x 12" 3.75 lb
 - 14 x 17" 5.95 lb
- Water/Dust Intrusion Rating IP67
- Batteries
 - 10 x 12" ≈6h (1 battery slot)
 - 14 x 17" ≈12h (2 battery slots)
- AED (Auto Exposure Control) Zero EMI Optical trigger
- Dead Space Margins 0.11" on two sides (Bezel thickness)
- Other Features Accelerometer, Auto-orientation

Cuattro EOD™ Software Features:

- Full XTK Integration with Direct Mosaic Input
- Complete Source Integration (5pin and 7pin versions) with Automated Adjustments
- Quick Set and Shoot workflow
- Cuattro True OnePulse Mode
- Complete set of Image tools with Advanced Multi-Frequency processing tools
- Multi-Detector Capable



A Smarter direction in Digital Radiography... Better. Much better.

www.cuattro.com • toll free: 800.709.4514

Specifications and design are subject to change without notice and may vary based on operating conditions. Names of companies or products appearing in this document are trademarks of their respective owners. Cuattro and Cuattro EOD are trademarks of Cuattro, LLC in the United States and may also be registered trademarks or trademarks in other countries.

* Accessory may be required.

© 2025 Cuattro, LLC. All rights reserved.

24LT0802_003



cuattro
imaging the possibilities

